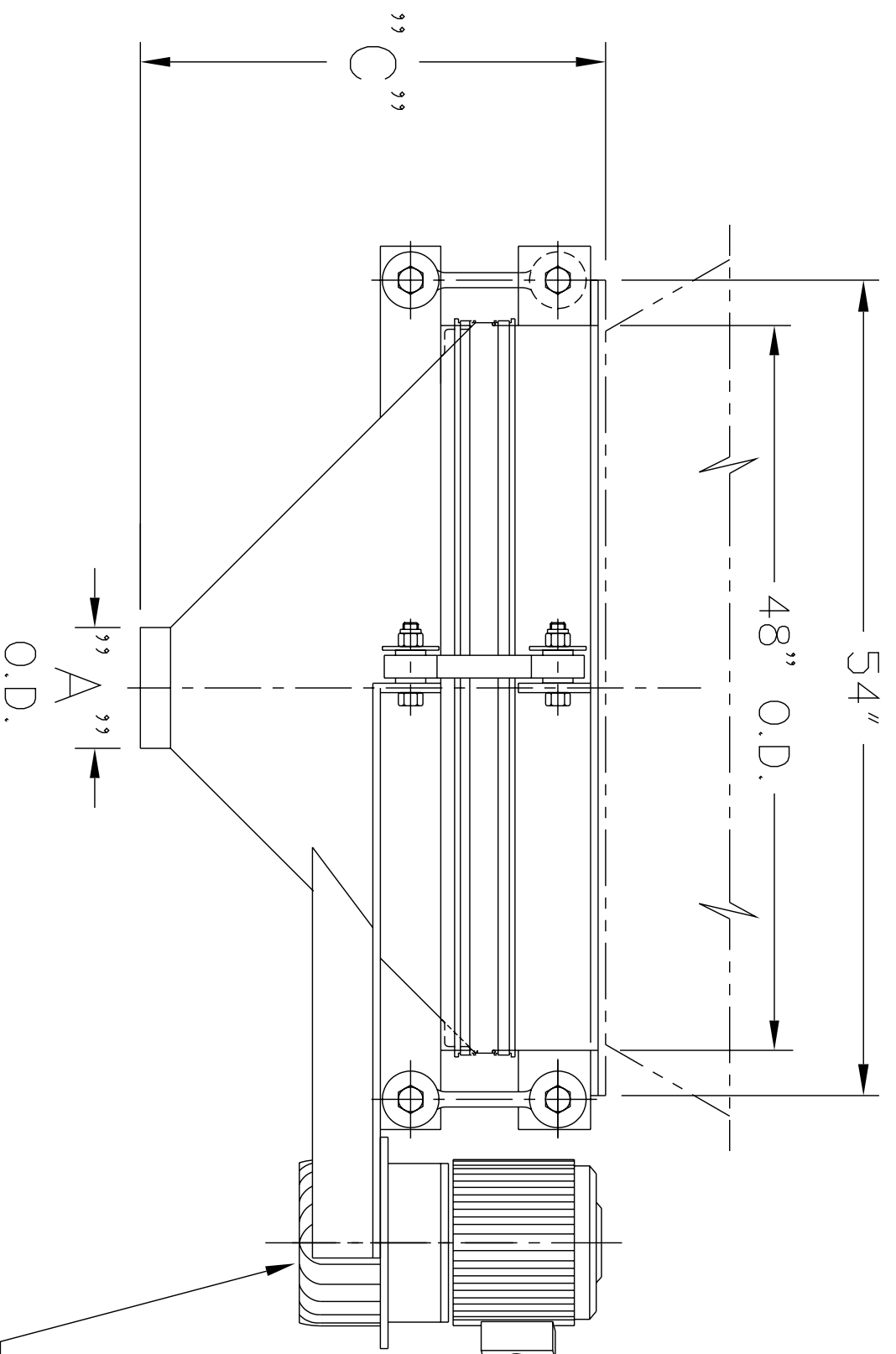
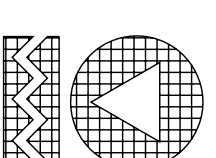


"A" O.D.	"C"
8" O.D.	30 3/8"
10" O.D.	29 3/8"
12" O.D.	28 3/8"

THE RECIPIENT OF THIS DOCUMENT AGREES NOT TO REPRODUCE, COPY, TRANSMIT OR USE THIS DOCUMENT AND/OR THE INFORMATION CONTAINED IN THIS DOCUMENT IN WHOLE OR IN PART, FOR ANY PURPOSE, EXCEPT WITH THE WRITTEN PERMISSION OF VIBRA SCREW INCORPORATED.



- NOTES:
- 1 - CONTACT MATERIAL: CARBON STEEL, 304 S/S, 316 S/S.
  - 2 - GYRATOR DRIVE TO BE: 2 HP, T.E.F.C., 1750 RPM, 230-460/3/60.
  - 3 - ALL ELECTRICAL CONNECTIONS TO BE FLEXIBLE
  - 4 - ALL CONNECTIONS TO BIN DISCHARGER MUST BE FLEXIBLE



**Vibra Screw Incorporated**  
755 Union Blvd. Totowa, N.J. 07512-2207

TITLE  
4'-0" DIA. BIN DISCHARGER  
CENTER FLAT STOCK  
AND 3K GYRATOR

DWN / DATE:  
MJM 8/22/01

CAD FILE NAME  
N:\BA\BD\STDASSY\17977-SD

DWG. NO.  
17977-SD

REV. NO.  
1