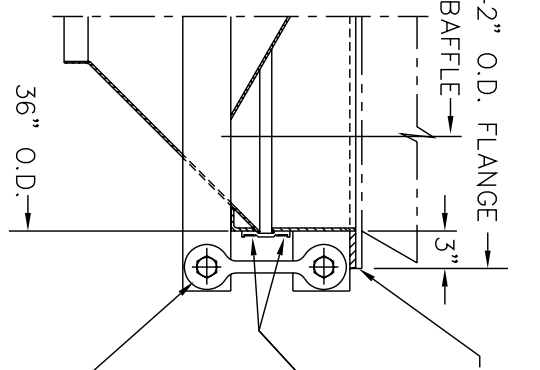


VIBRATOR ASSEMBLY  
SEE NOTES 2 & 3

NEOPRENE COVERED CABLE  
(SOO 16/4) APPROX. 6'-0"  
LG. SUPPLIED BY V.S.

SECTION A-A



42" O.D. FLANGE - DRILL IN FIELD TO MATCH V.S. SUPPORT FLANGE  
FLEXIBLE SLEEVE (MOLDED, BEADED, REINFORCED, NEOPRENE) & (2) S/S CLAMPS BY V.S.I.

VIBRATION ISOLATOR

"A" O.D.	"C"
8" O.D.	24 3/8"
10" O.D.	23 3/8"
12" O.D.	22 3/8"

THE RECIPIENT OF THIS DOCUMENT AGREES NOT TO REPRODUCE, COPY, TRANSMIT OR USE THIS DOCUMENT AND/OR THE INFORMATION CONTAINED IN THIS DOCUMENT IN WHOLE OR IN PART FOR ANY PURPOSE, EXCEPT WITH THE WRITTEN PERMISSION OF VIBRA SCREW INCORPORATED.

**Vibra Screw Incorporated**  
755 Union Blvd. Totowa, N.J. 07512-2207

TITLE 3'-0" DIA. BIN DISCHARGER CENTER FLAT STOCK AND GREASED VIBRATOR

DWN / DATE: MJM 8/21/01	DWG. NO. 17972-SD	REV. NO. 0
CAD FILE NAME N:\BA\BD\STDASSY\17972-SD		

- NOTES:
- 1 - CONTACT MATERIAL: CARBON STEEL, 304 S/S, 316 S/S.
  - 2 - VIBRATOR DRIVE TO BE: 0.62 HP, T.E.N.V., 1750 RPM, 230-460/3/60.
  - 3 - ALL ELECTRICAL CONNECTIONS TO BE FLEXIBLE
  - 4 - ALL CONNECTIONS TO BIN DISCHARGER MUST BE FLEXIBLE