

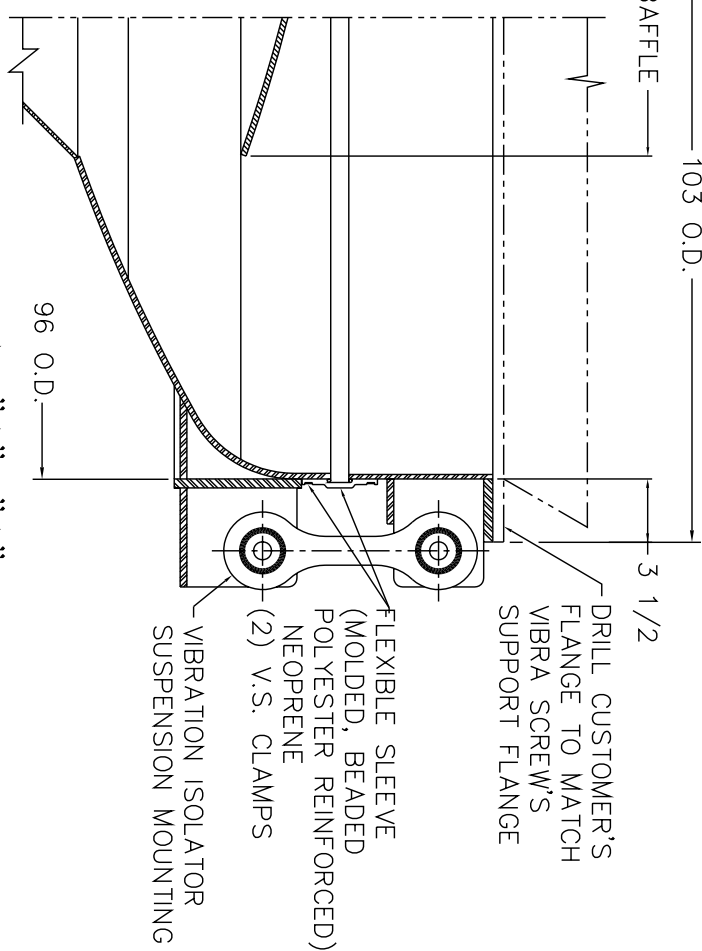
1 1/8 DIA. THRU
(40) PLACES EQUALLY
SPACED AS SHOWN ON
A 99 DIA. B.C.

63 5/8 APPROX.

VIBRATING BAFFLE

103 O.D.

3 1/2

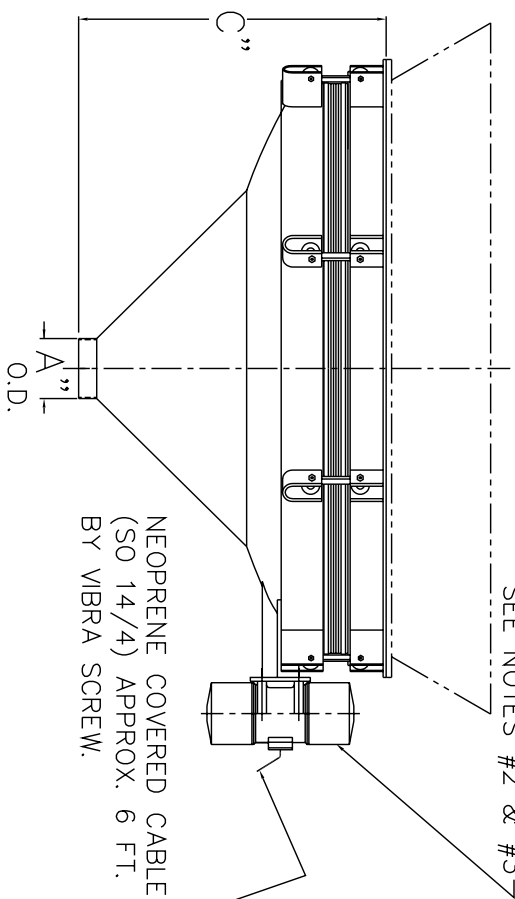


SECTION "A" - "A"

NOTES :

- 1 - CONTACT MAT'L. - CARBON STEEL, 304 S.S. OR 316 S.S.
- 2 - VIBRATOR MOTOR : 2 1/2 H.P., TENNY, 1800 RPM
230 OR 460/3/60
- 3 - ALL ELECTRICAL CONNECTIONS TO BE FLEXIBLE.
- 4 - ALL CONNECTIONS TO BIN ACTIVATOR TO BE FLEXIBLE.

VIBRATOR MOTOR
SEE NOTES #2 & #3



NEOPRENE COVERED CABLE
(SO 14/4) APPROX. 6 FT. LG.
BY VIBRA SCREW.

DASH No.	A" O.D.	C" HEIGHT
-1	8" O.D.	52 1/4"
-2	10" O.D.	51 1/4"
-3	12" O.D.	50 1/4"
-4	14" O.D.	49 1/4"

REV.	A	RELEASED FOR REFERENCE	L.K.	9/19/95	DMK BY DATE	CHK BY DATE	APP BY DATE	ESG APP DATE	
<p>DO NOT SCALE PRINT</p> <p>UNLESS OTHERWISE SPECIFIED DIMENSIONS ARE IN INCHES</p> <p>TOLERANCES : .XX = ±.01 XXX = ±.005 FRACTIONS = ±1/32 ANGLES = ±1/2°</p> <p>REMOVE ALL BARRS FROM DIMENSIONS .005-.015 ALL SMALL FILLETS .020-.040R 63-125 MICRO INCHES</p> <p>SCALE 3/4"=1'-0"</p> <p>W/ UNUNITED VIBRATOR</p> <p>8"-0" DIA. BIN ACTIVATOR WITH PRE-ASSEMBLED MOUNTING RING</p> <p>755 UNION BLVD. TOTOWA, N.J. 07512</p> <p>Vibra Screw Incorporated</p> <p>THE REPRODUCTION OF THIS DOCUMENT IS NOT TO BE PERMITTED WITHOUT THE WRITTEN PERMISSION OF VIBRA SCREW INCORPORATED.</p> <p>DMC. NO. 175886-SD</p>									